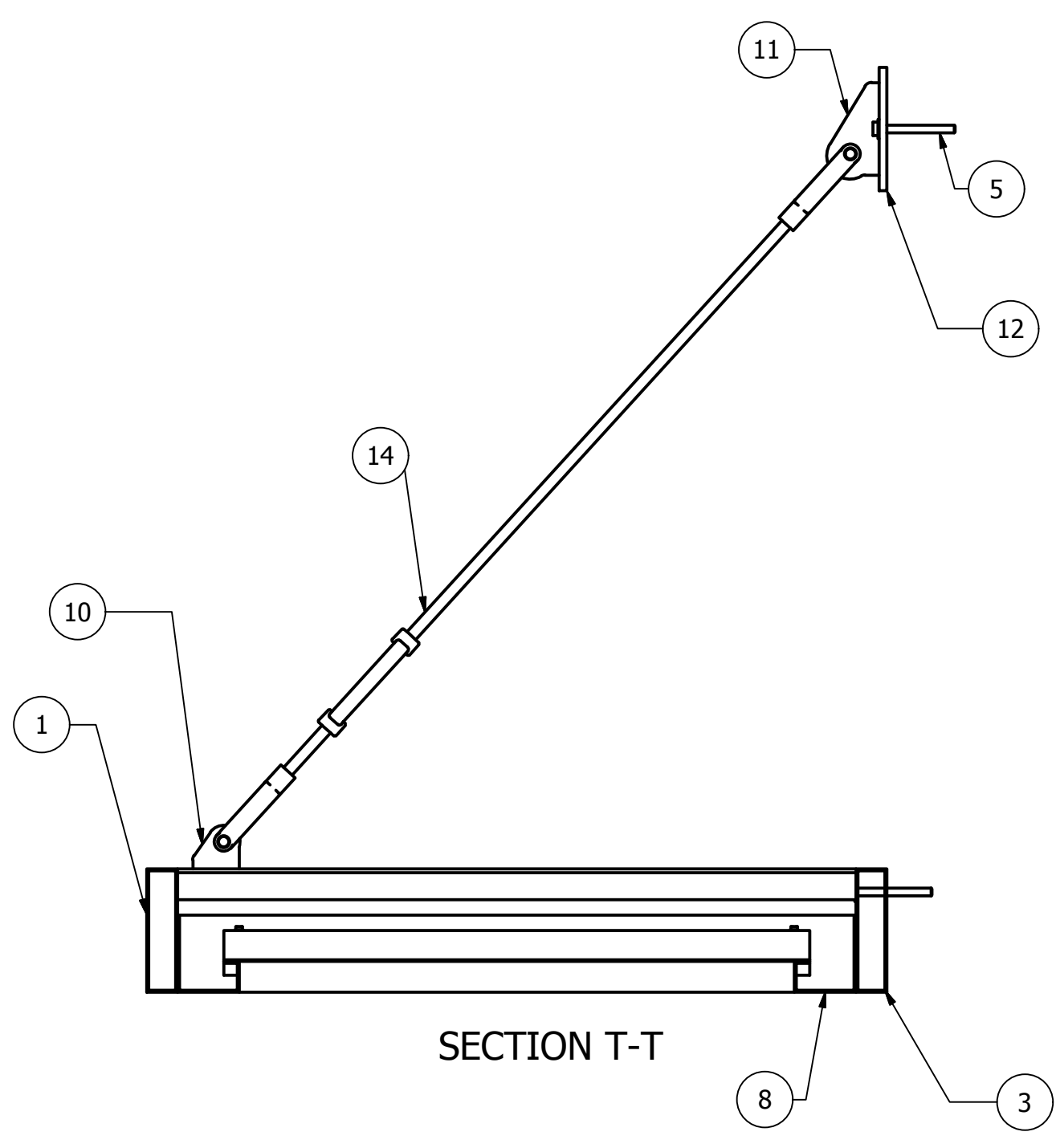
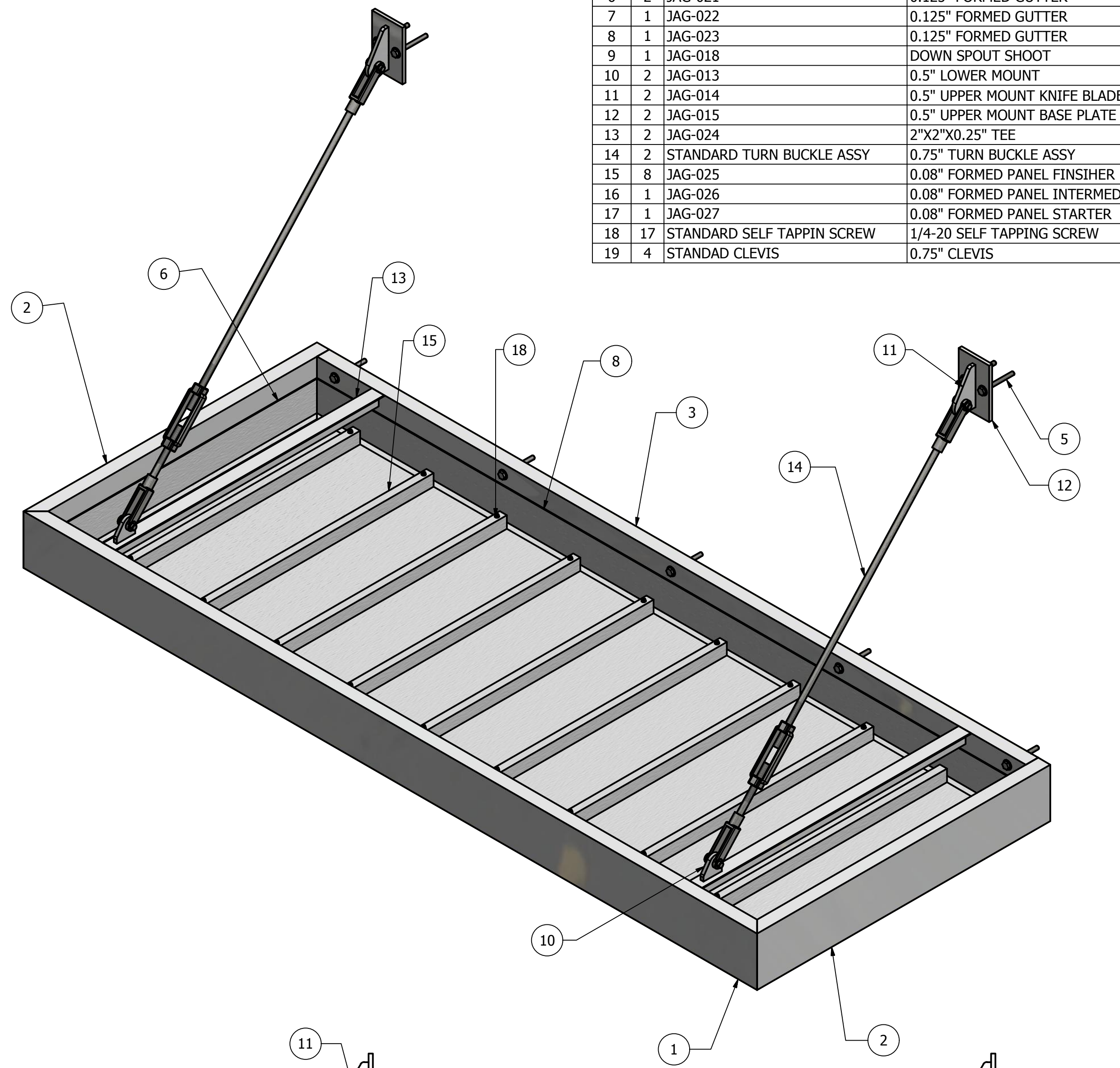
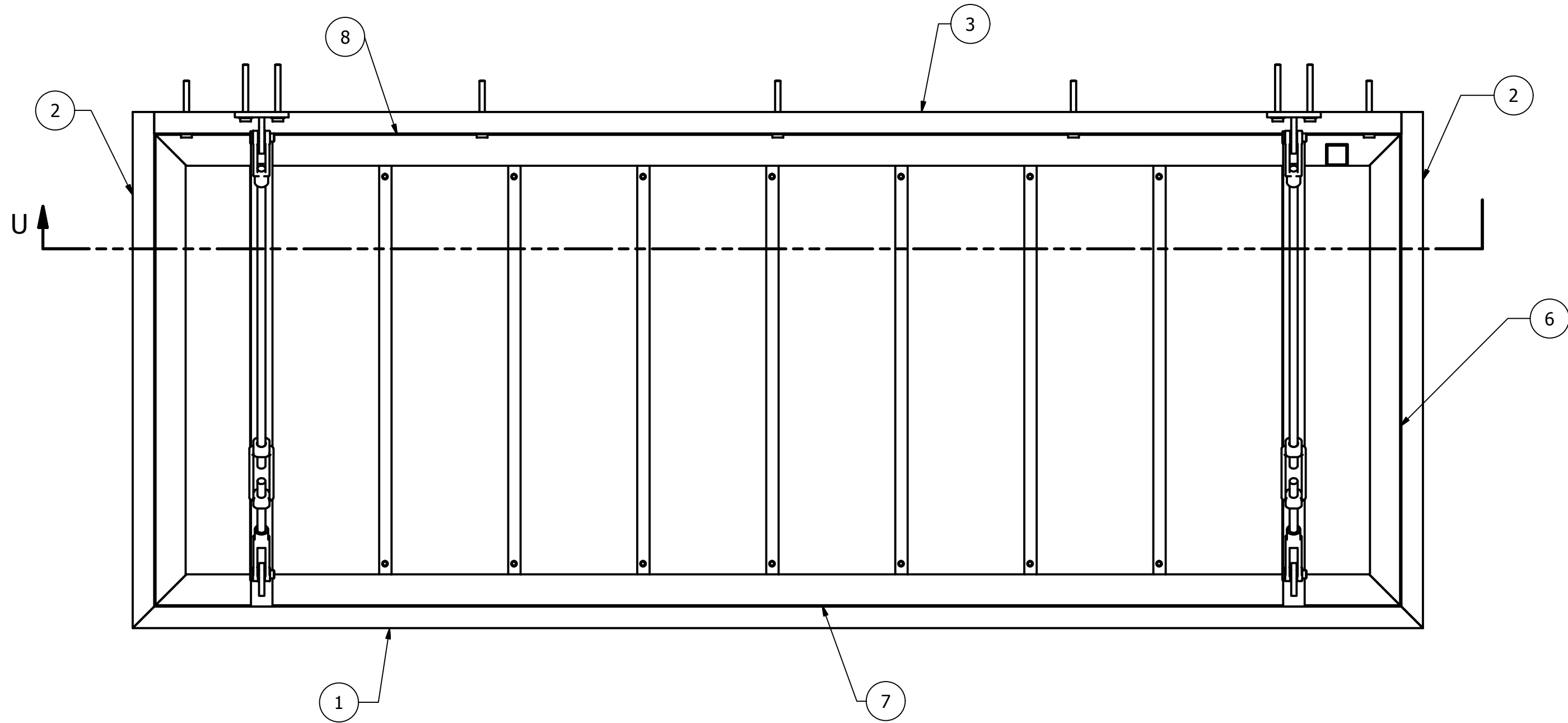
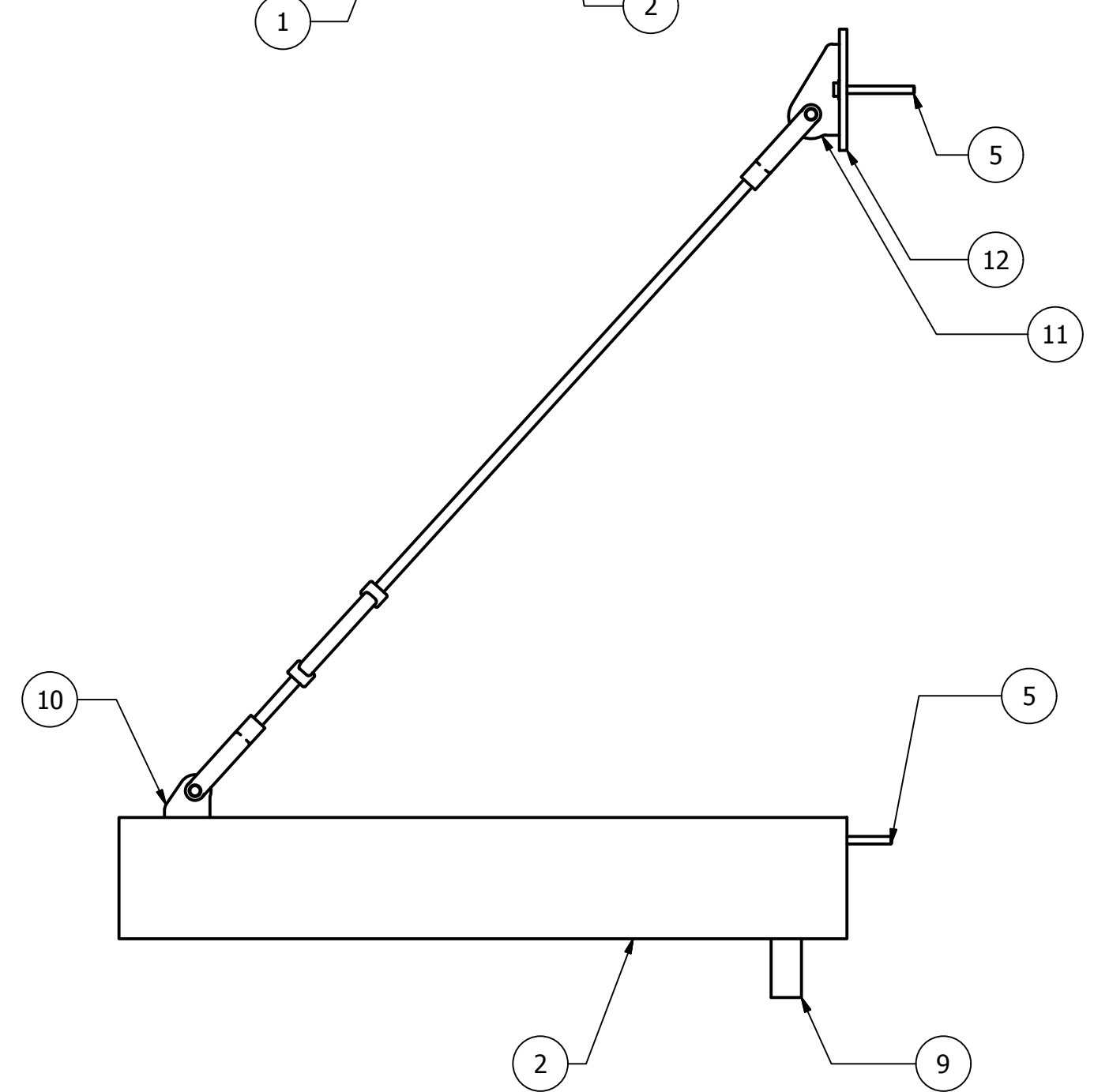


SECTION U-U



SECTION T-T



PARTS LIST				
ITEM	QTY	PART NUMBER	DESCRIPTION	MATERIAL
1	1	JAG-001	2"X8"X0.125" RECTANGULAR TUBING	Aluminum 6061
2	2	JAG-010	2"X8"X0.125" RECTANGULAR TUBING	Aluminum 6061
3	1	JAG-020	2"X8"X0.125" RECTANGULAR TUBING	Aluminum 6061
4	9	STANDARD WASHER	0.5" WASHER	Steel, Galvanized
5	9	STANDARD LAG BOLT	6" LONG X 0.5" DIAM. LAG BOLT	Steel, Galvanized
6	2	JAG-021	0.125" FORMED GUTTER	Aluminum 5052
7	1	JAG-022	0.125" FORMED GUTTER	Aluminum 5052
8	1	JAG-023	0.125" FORMED GUTTER	Aluminum 5052
9	1	JAG-018	DOWN SPOUT SHOOT	Aluminum 6061
10	2	JAG-013	0.5" LOWER MOUNT	Aluminum 6061
11	2	JAG-014	0.5" UPPER MOUNT KNIFE BLADE	Aluminum 6061
12	2	JAG-015	0.5" UPPER MOUNT BASE PLATE	Aluminum 6061
13	2	JAG-024	2"X2"X0.25" TEE	Aluminum 6061
14	2	STANDARD TURN BUCKLE ASSY	0.75" TURN BUCKLE ASSY	Steel, Galvanized
15	8	JAG-025	0.08" FORMED PANEL FINISHER	Aluminum 5052
16	1	JAG-026	0.08" FORMED PANEL INTERMEDIATE	Aluminum 5052
17	1	JAG-027	0.08" FORMED PANEL STARTER	Aluminum 5052
18	17	STANDARD SELF TAPPING SCREW	1/4-20 SELF TAPPING SCREW	Steel, Mild
19	4	STANDARD CLEVIS	0.75" CLEVIS	Stainless Steel

SHOP NOTES:

RECTA-SEAM

PROJECT SITE:	LOCATION:	CUSTOMER:	PROJECT MANAGER:	CHECKED BY:	W.O. #:
TOLERANCE:	UNLESS OTHERWISE SPECIFIED DIMENSIONS ARE IN INCHES	TOLERANCE UNLESS NOTED:	X.X ± 0.03 X.XX ± 0.015 X.XXX ± 0.010 MAX HOLE DIMENSION IS 0.015 IN THICKNESS	DATE:	11/30/2015
DRAWN BY:	REVISION #:	SHEET:	5/9	SCALE:	DWG #:

234 WEST WARRICK STREET
 KNOX, TN
 37618
 PHONE: 765-445-4459
 FAX: 765-445-4456
 PHONE EXT: 125

JAG METAL SOLUTIONS, INC.
 We reserve the right to make improvements without notice. This data should not be assumed current, unless verified by JAG Engineering. Concept, illustrative and written information, JAG Metal Solutions Inc. reproduction of all or any of this drawing or parts thereof, or any part thereof, without the written consent of JAG Metal Solutions, Inc. is prohibited.

